

LATERAL REHABILITATION & REPLACEMENT SYSTEMS

**PARTS, ACCESSORIES AND
CONSUMABLES CATALOG**



COMPLETE LATERAL TRENCHLESS SOLUTIONS FROM HAMMERHEAD

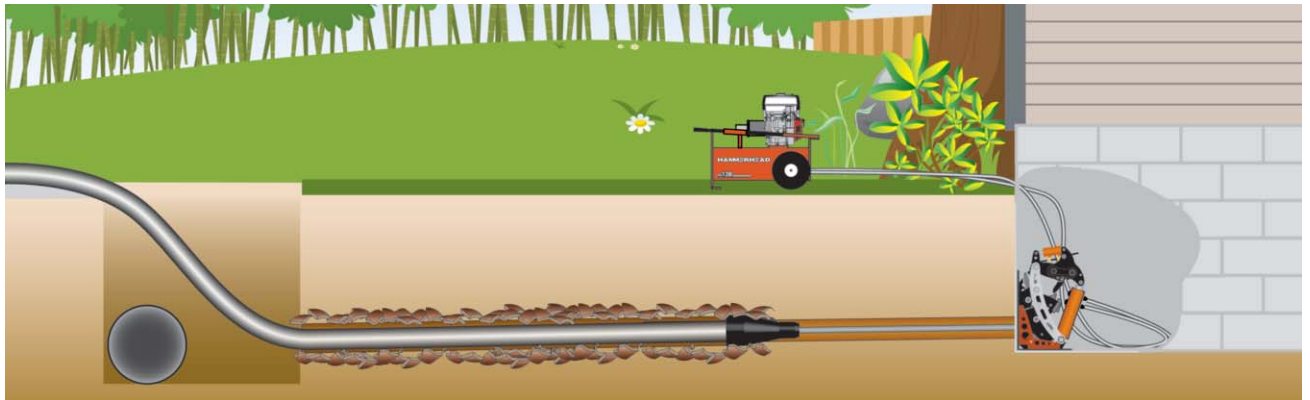
LATERAL REHABILITATION WITH HYDRALINER® CURED IN PLACE LINING SYSTEMS

Leading the way in trenchless, HammerHead provides plumbers, contractors and municipalities the latest advancements in Cured-In-Place-Pipe (CIPP) systems and related products targeted specifically for the municipal, residential, and commercial markets.

Lining with HammerHead CIPP products is extremely simple. After the host pipe is cleaned and televised the liner is prepped and attached to a vacuum pump to eliminate entrapped air ensuring complete resin impregnation. The easy-to-handle, two-part, styrene free resin is calculated, measured, mixed, and poured into the liner.

The liner is then passed through our cutting edge wet out table and wound into a Hydra inversion drum, after which the liner is inverted into the pipe. It is at this point that the liner is held in place and cured via hot water, steam, or ambiently and creates a tight-fitting, seamless, pipe-within-a-pipe repair.

HammerHead takes pride in conforming to the industry standard ASTM F 1216* and being your one-stop shop for all your lateral trenchless needs.



REPLACEMENT OF SEWER LATERALS WITH PORTABURST® LATERAL PIPE BURSTING SYSTEMS

A typical job site with the PortaBurst pipe bursting system is set up at the house. Alternatively the unit can be set up in the basement or at the clean out. The burst head is pulled through the lateral, bursting the existing pipe, while simultaneously pulling in the new pipe. Unlike the pipe lining process, pipe bursting lets you install the same or larger size new HDPE pipe.



NEW SERVICE INSTALLATIONS WITH HAMMERHEAD MOLE® PNEUMATIC PIERCING TOOLS

HammerHead Mole pneumatic piercing tools create a compact hole for almost any underground installation with minimal disruption to landscapes, buildings or normal traffic flow. The process is preferred by many contractors because of its low operating cost per foot of installation, reasonable equipment investment, and easy-to-learn equipment operation.

TABLE OF CONTENTS

HYDRALINER® LATERAL REHABILITATION SYSTEMS, PARTS AND CONSUMABLES

Epoxy Resins	4-5
Liners.....	6-7
Calibration Tubes.....	8
Pre-liner & Point Repair	9
Accessories.....	10
Inversion Drum Nozzles	11
Composite Inversion Drums	12
Steel Inversion Drums.....	13
Ambient Curing Systems.....	14
Hot Water Curing Systems.....	15
Steam Curing Systems	16
Wet Out Tables	17

PORTAVISION® CAMERA SYSTEMS

Lateral Camera System and Accessories.....	18-19
--	-------

PORTABURST® LATERAL BURSTING SYSTEMS, PARTS AND ACCESSORIES

PortaBurst PB30 Gen 2 Pipe Bursting System	20-21
PortaBurst Lightning® Pipe Bursting System	22-23
Tooling Selection Chart.....	24
Quick Grip® Burst Heads.....	25
Lateral Bursting Accessories and Tooling	26

WATER LINE SLITTERS

Water Line Slitters.....	27
--------------------------	----

HYDRALINER EPOXY RESIN SYSTEM



PROTECT THE ENVIRONMENT, USE STYRENE FREE RESINS.

We only sell top of the line, 100% solids, epoxy resin blends to ensure the highest quality installations while still protecting the environment.

Epoxy resins are inherently free of odors, HAP, and volatile VOC emissions. They also provide superior adhesion and are virtually shrink free compared to styrene making them the best choice for CIPP applications.

HydraLiner epoxy resins have a proven track record in conjunction with felt, woven or fiberglass liner materials.

HYDRALINER EPOXY RESIN SYSTEM

HydraLiner Epoxy is a single resin system with multiple choices of 4:1 (by volume) curing agent hardeners. HydraLiner Epoxy resin is tinted transparent blue, and the hardeners are transparent yellow. When the resins are properly mixed, a uniform aqua green color is achieved. All of the HH Resin and HH Hardener combinations can be cured with hot water, steam, or ambiently.

Description	Net Weight	Part #
5 Gallon Bucket	45 lbs	922-5500
55 Gallon Drum	495 lbs	922-5510
275 Gallon Tote	2,475 lbs	922-5520

STANDARD HARDENER

With a working time of 30–35 minutes (@77° F), our standard hardener provides a good balance between working time and set time (1–3 hours with heat curing).

5 Gallon Bucket	40 lbs	922-5501
55 Gallon Drum	440 lbs	922-5511
275 Gallon Tote	2,200 lbs	922-5521

SUMMER HARDENER

A longer working time (50–60 minutes at (@77° F) is useful when used in hot weather or for long or large diameter pipe runs. Also provides a higher temperature resistance which allows it to be used for projects in high temperature applications (up to 240°F). Set time of 1.5–3 hours with heat curing.

5 Gallon Bucket	40 lbs	922-5503
55 Gallon Drum	440 lbs	922-5512
275 Gallon Tote	2,200 lbs	922-5522

WINTER HARDENER

Our fastest curing hardener (45–90 minutes with heat curing), this blend with 12–15 minute working time resin is useful for winter applications and for smaller applications requiring a fast return to service time.

5 Gallon Bucket	40 lbs	922-5502
55 Gallon Drum	440 lbs	922-5513
275 Gallon Tote	2,200 lbs	922-5523



HYDRALINER EXTENDED EPOXY RESIN SYSTEM

EXTENDED RESINS



HYDRALINER EXTENDED EPOXY RESIN

Our Extended Epoxy Resin is formulated for longer working times useful in long runs, larger diameter pipe or higher temperature working conditions. This system has a working time of four hours (@77° F) while still keeping a fast set time range of one to four hours with hot water or steam cure. (100:30 Resin to Hardener).

Description	Net Weight	Part #
5 Gallon Bucket	45 lbs	922-5530
55 Gallon Drum	495 lbs	922-5532
275 Gallon Tote	2,475 lbs	922-5534

HYDRALINER EXTENDED HARDENER

5 Gallon Bucket	40 lbs	922-5531
55 Gallon Drum	495 lbs	922-5533
275 Gallon Tote	2,200 lbs	922-5535



QUICK & ACCURATE RESIN MIXTURES

Eliminate confusing mix charts, mixing errors and waste. The HydraLiner APP from HammerHead provides you quick access to resin mix calculations and cure times based on your specific project specifications.

Download the 'HydraLiner Calculator' mobile APP today!



HAMMERHEAD

LINERS

HAMMERHEAD STANDARD LINER

Made of the highest quality materials, our standard liner is suitable for ambient and hot water cure applications and is a cost effective solution for projects without bends or diameter transitions.

Description	Quantity	Part #
4.00" HH Liner (Roll)	328' (100 m)	922-5023
5.00" HH Liner (Roll)	328' (100 m)	922-5031
6.00" HH Liner (Roll)	328' (100 m)	922-5024
8.00" HH Liner (Roll)	328' (100 m)	922-5025
10.00" HH Liner (Roll)	328' (100 m)	922-5100
12.00" HH Liner (Roll)	328' (100 m)	922-5101

HAMMERHEAD FLEX LINER

This highly flexible liner is suitable for ambient and hot water cure applications and is an economical choice for installations with 45° and sweeping 90° bends and/or single diameter transitions.

2.00" HH Flex Liner (Roll)	328' (100 m)	922-5037
3.00" HH Flex Liner (Roll)	328' (100 m)	922-5038
4.00" HH Flex Liner (Roll)	328' (100 m)	922-5020
5.00" HH Flex Liner (Roll)	328' (100 m)	922-5030
6.00" HH Flex Liner (Roll)	328' (100 m)	922-5021
8.00" HH Flex Liner (Roll)	328' (100 m)	922-5022

HAMMERHEAD BRAWOLINER®

Suitable for ambient and hot water cure applications, HH BRAWOLINER is a premium, woven, seamless liner that is by far the best choice for installations with 45° and sweeping 90° bends and/or single diameter transitions.

2.00" HH Brawoliner (Roll)	164' (50 m)	922-5252
3.00" HH Brawoliner (Roll)	328' (100 m)	922-5253
4.00" HH Brawoliner (Roll)	328' (100 m)	922-5254
5.00" HH Brawoliner (Roll)	328' (100 m)	922-5255
6.00" HH Brawoliner (Roll)	328' (100 m)	922-5256
8.00" HH Brawoliner (Roll)	328' (100 m)	922-5258

HAMMERHEAD STEAM LINER

Designed to withstand the rigors of quick cure, high temperature steam applications, this high quality liner is a cost effective solution for projects without bends or diameter transitions.

6.00" HH Steam Liner (Roll)	328' (100 m)	922-5112
8.00" HH Steam Liner (Roll)	328' (100 m)	922-5113
10.00" HH Steam Liner (Roll)	328' (100 m)	922-5104
12.00" HH Steam Liner (Roll)	328' (100 m)	922-5105

HAMMERHEAD FLEX STEAM LINER

This liner has the flexibility needed to line 45° and sweeping 90° bends and/or diameter transitions and the durability for quick cure, high temperature steam applications.

4.00" HH Steam Flex Liner (Roll)	328' (100 m)	922-5111
6.00" HH Steam Flex Liner (Roll)	328' (100 m)	922-5102
8.00" HH Steam Flex Liner (Roll)	328' (100 m)	922-5103





liner flex 2.75-9%

Visit our website at www.hammerheadtrenchless.com.
For ordering or pricing information, contact your regional sales representative.

CALIBRATION TUBES

HEAVY DUTY CALIBRATION TUBES

Tough and resilient, our PVC-based calibration tubes have a high temperature resistance and are versatile enough for ambient, hot water and steam curing applications. Compatible with most resin types (epoxy, polyester, vinylester, and silicate).

HEAVY DUTY CALIBRATION TUBES		
Description	Quantity	Part #
4.00" Calibration Tube, HD (Roll)	328' (100 m)	922-5026
5.00" Calibration Tube, HD (Roll)	328' (100 m)	922-5034
6.00" Calibration Tube, HD (Roll)	328' (100 m)	922-5027
8.00" Calibration Tube, HD (Roll)	328' (100 m)	922-5028
10.00" Calibration Tube, HD (Roll)	328' (100 m)	922-5109
12.00" Calibration Tube, HD (Roll)	328' (100 m)	922-5110

LIGHT DUTY CALIBRATION TUBES

Our light duty calibration tubes are an economical solution for small diameter projects and suitable for ambient cure applications. Compatible with all liners and most resin types (epoxy, polyester, vinylester, and silicate).

LIGHT DUTY CALIBRATION TUBES		
Description	Quantity	Part #
2.00" Calibration Tube, LD (Roll, Yel)	328' (100 m)	922-5035
3.00" Calibration Tube, LD (Roll, Grn)	328' (100 m)	922-5039

PRE-LINER AND POINT REPAIR

HAMMERHEAD PRE-LINER

Made of a durable polyethylene based tubular film, pre-liners prevent the buckling of liners in pipes with larger damaged areas. During the rehabilitation process, they are pulled in or inverted and positioned between the pipe wall and the liner. They also prevent the washing out of resin in the presence of groundwater or water penetration.

HAMMERHEAD PRE-LINER

Description	Quantity	Part #
4.00" HH Pre-Liner (Roll)	328' (100 m)	922-5134
5.00" HH Pre-Liner (Roll)	328' (100 m)	922-5135
6.00" HH Pre-Liner (Roll)	328' (100 m)	922-5136
8.00" HH Pre-Liner (Roll)	328' (100 m)	922-5138
10.00" HH Pre-Liner (Roll)	328' (100 m)	922-5140
12.00" HH Pre-Liner (Roll)	328' (100 m)	922-5142



LOOKING FOR POINT REPAIR SOLUTIONS?

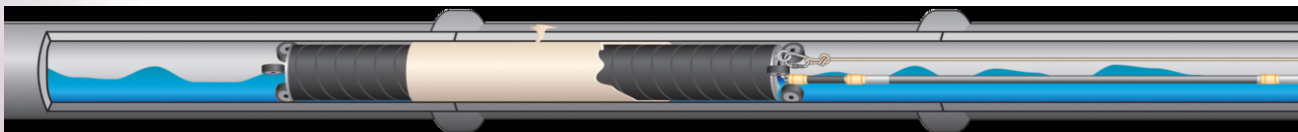
Look no further than HammerHead's strategic partner, Source One Environmental.

The increasing rate of sanitary and storm sewer deterioration requires an efficient and cost-effective rehabilitation solution. PipePatch's CIPP cured in place point repair trenchless technology replaces the need for contractors to carefully dig while maneuvering around utilities to unearth the area in need of repair.

By using PipePatch's CIPP point repair methods, you are reducing the high costs associated with traditional dig methods of pipe rehabilitation.

PipePatch's CIPP point repair technology also eliminates the negative impacts on the daily life and activities of people, businesses, homes and traffic in the area.

Undesirable noise and environmental pollution are also eliminated with PipePatch's CIPP point repair trenchless technology.



Phone: 810.412.4740
Web: www.s1eonline.com

 **PipePatch**[®]
NO DIG Pipe Repair System

LINING ACCESSORIES



Recirculation Hose



Vaccum Pump, 7 cfm, 1/2 HP



Digital Thermometer



Electronic Scale



Vaccum Line Set



Digital Thermometer Probe Wire



Drum Cap



Pull Tape

MISCELLANEOUS ACCESSORIES

Description	Quantity	Part #
Vacuum Pump		922-1003
Vacuum Line Set		922-5007
Electric Drill Mixer		922-1004
Electronic Scale		922-1005
Mixing Paddle		922-1016
Digital Thermometer Probe Wire	39.00"	922-5014
Digital Thermometer (Type K)		922-1006
Drum Cap, 6.00"		922-5006
Drum Cap, 8.00"		922-5032

RECIRCULATION HOSE AND FITTINGS

Recirculation Hose, 1.00" (Roll)	164' (50 m)	922-5015
Fitting, Recirculation Hose		922-5042

PULL TAPE

Pull Tape, 1.00" (Roll)	328' (100 m)	922-5013
-------------------------	--------------	----------



HOSE CLAMPS

Hose Clamp, (1.00 – 1.25")	Bag of 10	922-5010
Hose Clamp, (1.25 – 2.25")	Bag of 5	922-5011
Hose Clamp, (1.75 – 2.75")	Bag of 5	922-5204
Hose Clamp, (2.50 – 3.50")	Bag of 5	922-5200
Hose Clamp, (3.00 – 4.00")	Bag of 5	922-5008
Hose Clamp, (4.50 – 6.00")	Bag of 5	922-5009
Hose Clamp, (8.00")	Bag of 5	922-5201
Hose Clamp, (10.00")	Bag of 5	922-5202
Hose Clamp, (12.00")	Bag of 5	922-5203

INVERSION DRUM NOZZLES

MINI-HYDRA NOZZLES (STEEL OR COMPOSITE DRUMS)

Description	Connection	Part #
2.00" Nozzle (straight)	6.00" Storz	922-5043
3.00" Nozzle (straight)	6.00" Storz	922-5044
4.00" Nozzle (straight)	6.00" Storz	922-5004
4.00" Nozzle (90°)	6.00" Storz	922-5002
6.00" Nozzle (straight)	6.00" Storz	922-5005
6.00" Nozzle (90°)	6.00" Storz	922-5003

HYDRA NOZZLES (STEEL OR COMPOSITE DRUMS)

2.00" Nozzle (straight)	6.00" Storz	922-5043
3.00" Nozzle (straight)	6.00" Storz	922-5044
4.00" Nozzle (straight)	6.00" Storz	922-5004
4.00" Nozzle (90°)	6.00" Storz	922-5002
6.00" Nozzle (straight)	6.00" Storz	922-5005
6.00" Nozzle (90°)	6.00" Storz	922-5003
8.00" Nozzle (straight)	6.00" Storz	922-5018
8.00" Nozzle (90°)	6.00" Storz	922-5017

SUPER-HYDRA NOZZLES (STEEL OR COMPOSITE DRUMS)

4.00" Nozzle (straight)	8.00" Storz	922-5049
4.00" Nozzle (90°)	8.00" Storz	922-5070
6.00" Nozzle (straight)	8.00" Storz	922-5050
6.00" Nozzle (90°)	8.00" Storz	922-5071
8.00" Nozzle (straight)	8.00" Storz	922-5051
8.00" Nozzle (90°)	8.00" Storz	922-5072
10.00" Nozzle (straight)	8.00" Storz	922-5052
10.00" Nozzle (90°)	8.00" Storz	922-5073
12.00" Nozzle (straight)	8.00" Storz	922-5053
12.00" Nozzle (90°)	8.00" Storz	922-5074

STORZ WRENCHES (STEEL OR COMPOSITE DRUMS)

6.00" Storz Wrench, Set of 2	6.00" Storz	922-5075
8.00" Storz Wrench, Set of 2	8.00" Storz	922-5076



90° Inversion Drum Nozzle



Straight Inversion Drum Nozzle

COMPOSITE INVERSION DRUMS

COMPARING OUR DRUMS TO THE COMPETITION IS ALMOST UNFAIR.

Simply put, HydraLiner composite drums are on the cutting edge of CIPP inversion drum technology. And HammerHead is proud to be the first and only company in North America to offer them.

Do more with less. We've cut the weight by as much as 50 percent compared to outdated inversion drums, making HydraLiner drums ultra-portable on your jobsite. But we didn't stop there. Besides making them lightweight, we increased drum capacity by as much as 35% when compared to drums of similar weight.

Composite drums easily withstand the higher temperatures needed for steam curing so you can use them for whatever your job or personal preferences call for. The rotational drum simplifies installations based on conditions on your jobsite. In addition they are easily maintained, corrosion free, and seamless, eliminating a common failure point in other drums.

HYDRALINER COMPOSITE INVERSION DRUMS

Description	Rec. Liner Size	Part #
Mini-Hydra Composite Drum	2.00-6.00"	922-1014
Hydra Composite Drum	2.00-8.00"	922-1015
Super-Hydra Composite Drum	2.00-12.00"	922-1020

COMPOSITE INVERSION DRUM PARTS AND ACCESSORIES

Description	Drum Model	Part #
Drum Cap, 6.00"	Mini-Hydra, Hydra	922-5506
Drum Cap, 8.00"	Super-Hydra	922-5032
Pressure Gauge	All Models	922-5036
Pressure Regulator	All Models	922-5012
Drum Fitting, Internal	All Models	922-5041
Gate Valve, with 2 Storz Couplings	All Models	922-5211



**Super-Hydra
Inversion Drum**



**Standard Hydra
Inversion Drum**



**Mini-Hydra
Inversion Drum**

PHONE: 800.331.6653 (USA only) | INTERNATIONAL: +1 262.567.8833
FACSIMILE: 262.567.8833 | EMAIL: info@hammerheadmole.com

STAINLESS STEEL INVERSION DRUMS

HEAVY DUTY STAINLESS STEEL CONSTRUCTION

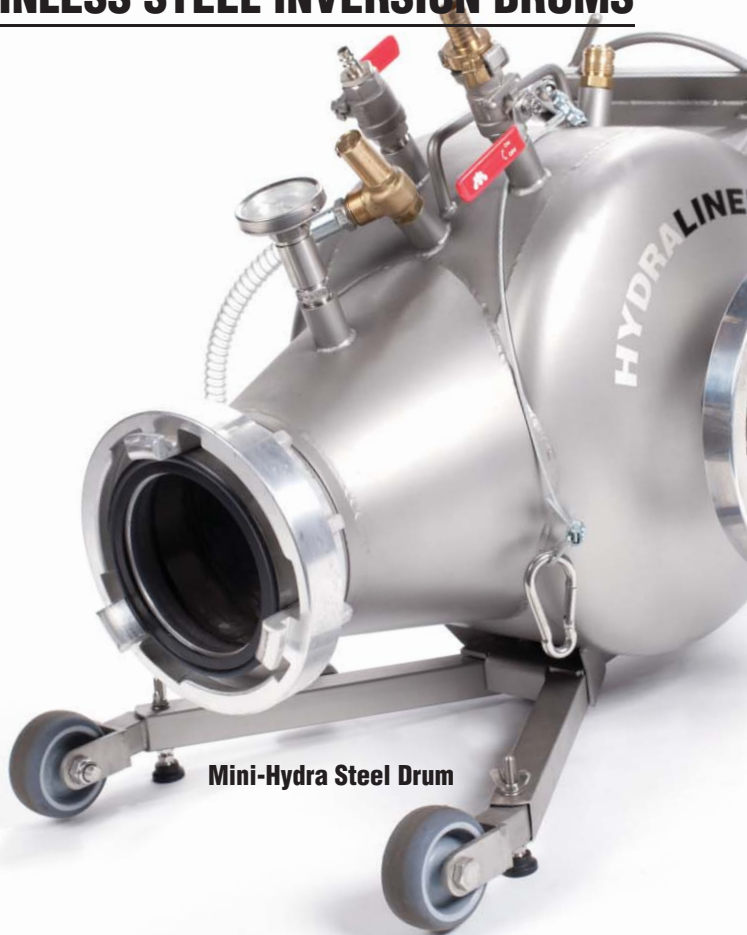
Easily maintained and corrosion free, these sturdy, stainless steel inversion drums are your economical choice for CIPP installations.

HYDRALINER STEEL INVERSION DRUMS

Description	Rec. Liner Size	Part #
Mini-Hydra Steel Drum	2.00–6.00"	922-1000
Hydra Steel Drum	2.00–8.00"	922-1001
Super-Hydra Steel Drum	4.00–12.00"	922-1019

STEEL INVERSION DRUM PARTS AND ACCESSORIES

Description	Drum Model	Part #
Drum Cap, 6.00"	Mini-Hydra, Hydra	922-5506
Drum Cap, 8.00"	Super-Hydra	922-5032
Pressure Gauge	All Models	922-5036
Pressure Regulator	All Models	922-5012
Drum Fitting, External	All Models	922-5040
Drum Fitting, Internal	All Models	922-5041
Gate Valve, with 2 Storz Couplings	All Models	922-5211



Mini-Hydra Steel Drum



Call about our best in class,
customizable, turn-key trailer solutions!

AMBIENT CURING SYSTEMS



Air Tank, 13 Gallon



Liner Clamp



Curing Cap



Air Pressure Gauge



Air Hose Reel, 100 ft Cap.



Air Hose w/couplers, 100 ft



Air Hose, Nylon, Coiled, 50 ft

ECONOMICAL AND PRODUCTIVE

On large projects where multiple services are lined, ambient curing can be a simple and economical solution. During the curing process a Curing Cap is placed so that the inversion drum may be used immediately on another line.

AMBIENT CURING SYSTEM COMPONENTS

Description	Part #
Air Tank (13 Gallon)	922-5400
Air Tank (30 Gallon)	922-5401
Air Pressure Gauge	922-5402
Air Hose, Nylon, Coiled, (50 ft)	922-5403
Air Hose, w/couplers (100 ft)	922-5404
Air Hose Reel (100 ft Capacity)	922-5405
2.00" Curing Cap	922-5420
3.00" Curing Cap	922-5421
4.00" Curing Cap	922-5422
6.00" Curing Cap	922-5423
8.00" Curing Cap	922-5424
2.00-4.00" Liner Clamp	922-5425
4.00-8.00" Liner Clamp	922-5426



Air Tank, 30 Gallon

HOT WATER CURING SYSTEMS



Hot Box, Diesel

SPEED UP YOUR CURE TIMES

Complete your individual projects quicker with hot water curing systems. Our compact and mobile hot box increases your productivity while allowing you to work year round in colder climates.

HOT WATER CURING SYSTEM COMPONENTS

Description	Drum Model	Part #
Hot Box, Diesel	All Models	922-1007
Water Pump, Hydra	All Models	922-1008
Inversion Hose, 6.00" (10 ft) with Couplers	Mini-Hydra, Hydra	922-5000
Inversion Hose, 8.00" (10 ft) with Couplers	Super-Hydra	922-5215
Digital Thermometer (Type K)	All Models	922-1006



Water Pump



Inversion Hose

STEAM CURING SYSTEMS

CURE IT QUICK WITH STEAM!

Steam is simply the fastest heat curing method available and can decrease cure times by up to 75 percent when compared to ambient curing systems.

STEAM CURING SYSTEM COMPONENTS

Description	Drum Model	Part #
Steam Generator	All Models	922-1017
Steam Hose Set	All Models	922-5212
Steam Inlet Drum Fitting	All Models	922-5213
Steam Inversion Hose, 6" (10 ft) (with couplers)	Mini-Hydra, Hydra	922-5214
Steam Inversion Hose, 8" (10 ft) (with couplers)	Super-Hydra	922-5216
Digital Thermometer (Type K)	All Models	922-1006



Steam Generator



Steam Inlet Drum Fitting



Steam Hose Set



Steam Inversion Hose

**PROFESSIONAL
INSTALLERS
WANT TOOLS
THAT HELP
GET THE JOB
DONE RIGHT.**

USE THE RIGHT TOOLS FOR YOUR JOB

Professional installers want tools that help them get their jobs completed on time and on budget.

Proper resin impregnation of liners is one of the keys to project success. With variable speed and pressure controls, our wet out tables can increase your efficiency and performance.

Simply put, our wet out tables are designed to provide you with precise and consistent wet outs ensuring the highest quality installed liner.

WET OUT TABLE

Description	Part #
Wet Out Table	922-1002
Gap Gauge, Replacement Set	6, 8 & 10 mm 922-5081



PORTAVISION® CAMERA SYSTEM



The iPad easily removes from the PortaVision unit, communicating with the unit via a Wi-Fi router, allowing the operator to roam freely away from the unit base.

PORTAVISION® CAMERA SYSTEM

BORN AHEAD OF ITS TIME. THE SMARTEST TECHNOLOGY. UNRIVALED VERSATILITY. CUT-THROUGH CLARITY.

HammerHead® puts the power of it all right at your fingertips. The new PortaVision pipe-inspection camera begins a new era of technology, with a retina-display iPad® 4 as its screen, giving you amazing flexibility on and off the job site.

Plus, we've kept all the features you already love, like instant snapshots, on-screen drawing and a full on-screen keyboard. Even more, the PortaVision comes with a self-leveling color camera, locating beacon and 200' of high efficiency, super-slick push rod. All this packaged into a unit light enough to transport anywhere.

The PortaVision only weighs 34 pounds, but we included a transport cart as standard, in case you'd rather wheel it around than carry it.

PORTAVISION CAMERAS

Description	Part #
PortaVision iPad Camera System (includes Camera Center for 4.00" Pipe)	922-1050
PortaVision Camera System (w/out iPad) (includes Camera Center for 4.00" Pipe)	922-1051

PORTAVISION ACCESSORIES

50 foot Wheeled Reel (Trapeze)	922-1010
Camera Center for 2.00" Pipe	922-1012
Camera Center for 4.00" Pipe	922-1053
Camera Center for 6.00" Pipe	922-1013
iPad, PortaVision Camera	922-1052



The optional 50' black and white mini-camera is an ultra-flexible camera that allows quick peeks into small drain lines — often without removing the trap — and easily connects to the PortaVision camera system, which automatically senses when the camera has been attached.

Visit our website at www.hammerheadtrenchless.com.
For ordering or pricing information, contact your regional sales representative.

PORTABURST® PB30 GEN2 PIPE BURSTING SYSTEM

RUGGED & POWERFUL, HIGH PROFIT TRENCHLESS

RUGGED SYSTEM RETURNS HIGH PROFITS

The PortaBurst® PB30 G2 is a rugged, portable, cost effective and efficient system for replacing 2" to 6" (50 to 150 mm) lateral pipes. Unlike CIPP, pipe bursting lets you install the same or larger size new HDPE pipe, in a minimum amount of time.

SUPERIOR PRODUCTION

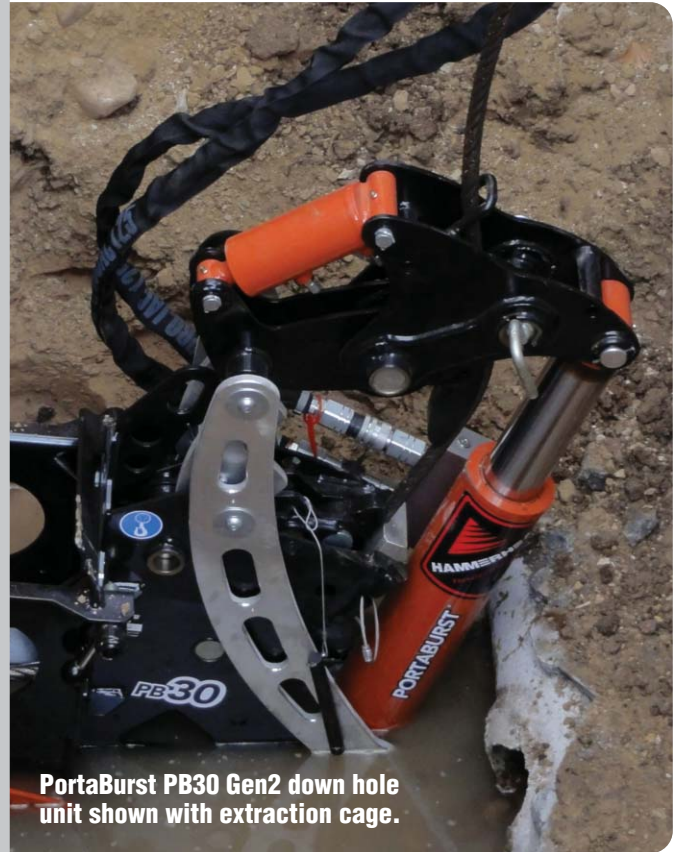
The PortaBurst PB30 G2 features modular construction with 30 tons of pulling force. Designed to run at 3,000 psi (207 bar) the system can be powered by a backhoe, compact excavator or any other portable hydraulic power pack. Once the unit is up and running production rates of up to 12 feet per minute ensure fast and efficient installation.

ENVIRONMENTALLY FRIENDLY

PortaBurst systems require small pits, reducing the amount of excavation and associated surface disruption, resulting in an environmentally friendly project.

VERSATILE

PortaBurst systems operate at low pressure, allowing them to be run by either a dedicated power pack or any third party power supply that produces 3,000 psi (207 bar) and a minimum 13 gallons per minute flow.



PortaBurst PB30 Gen2 down hole unit shown with extraction cage.

PORTABURST PB30 GEN2 PIPE BURSTING SYSTEM

Description	Part #
PortaBurst® PB30 Gen2 Pulling Unit	912-5031
Extraction Cage	912-3201

PORTABURST PB30 GEN2 REPLACEMENT PARTS

Stationary Jaw, PB30 G2, (one required)	912-5223
Shoe, PB30 G2, (two required)	912-4766

Pulling Cable, Swaged Cable, Stud End

PULLING CABLES

Description	Model	Part #
3/4" X 75 feet, Swaged, Stud End	All Models	912-3161
3/4" X 100 feet, Swaged, Stud End	All Models	912-3163
3/4" X 150 feet, Swaged, Stud End	All Models	912-3162

PORTABURST® PB30 GEN2 PIPE BURSTING SYSTEM

HYDRAULIC POWER PACK OPTIONS

Description	Model	Part #
PP13A (13 HP Honda) (requires Control Stand: 912-5052 or Coaster/Control Stand: 912-3346)	All Models	912-5050
PP13B (13 HP Honda) (includes on-board controls)	All Models	912-5055
PP3000 (requires Control Stand: 912-5052 or Coaster/Control Stand: 912-3346)	All Models	933-0100

CONTROL STATIONS FOR PP13A, PP3000 OR ALTERNATE SOURCE

Control Stand	All Models	912-5052
Coaster/Control Stand	All Models	912-3346
Hose, 5/8" x 15 feet (required to run system from an alternative hydraulic power source, two required)	All Models	912-3056
Quick Connect Coupler, Flat Face, Nipple, 1/2" (M)	All Models	912-3038
Quick Connect Coupler, Flat Face, Nipple, 1/2" (F)	All Models	912-3039



**PP13A
Power Pack**



**Extraction
Cage**



**Control
Stand**



**Coaster/
Control Stand**

Visit our website at www.hammerheadtrenchless.com.
For ordering or pricing information, contact your regional sales representative.

PORTABURST LIGHTNING® PIPE BURSTING SYSTEM

LIGHTWEIGHT & COMPACT PROFITABLE TRENCHLESS

HIGH PROFIT LATERAL REPLACEMENT

The PortaBurst Lightning is a lightweight, portable, cost-effective and efficient system for replacing 2" to 6" (50 to 150 mm) lateral pipes. Unlike CIPP, pipe bursting lets you install the same or larger size new HDPE pipe, in a minimum amount of time.

SUPERIOR PRODUCTION

The Lightning features modular aluminum construction and 30 tons of pulling force designed to work best where lateral pipes are shallow and pits are dug by hand. The system breaks down into four lightweight pieces for easy disassembly and assembly. Once the unit is up and running production rates of up to 12 feet per minute ensure fast and efficient installation.

ENVIRONMENTALLY FRIENDLY

PortaBurst systems require small pits, reducing the amount of excavation and associated surface disruption, resulting in an environmentally friendly project.

VERSATILE

PortaBurst systems operate at low pressure, allowing them to be run by either a dedicated power pack or any third party power supply that produces 3,000 psi (207 bar) and a minimum 13 gallons per minute flow.

PEOPLE, SERVICE & SUPPORT

For decades HammerHead has led the industry in bringing innovative trenchless solutions to our customers. No project is the same, so our dedicated team of industry experts creates customized solutions to meet your needs.

In addition, a global network of authorized dealers, are there to support you after the sale. In the field, on the phone or in your office — you can count on HammerHead to be your trusted partner.



PORTABURST LIGHTNING PIPE BURSTING SYSTEM

Description	Part #
PortaBurst Lightning Pulling Unit	912-5000
Extraction Cage	912-3201

LIGHTNING REPLACEMENT PARTS

Stationary Jaw, Lightning (1 required)	912-4541
Shoe, Lightning (1 required)	912-3079
Jaw, 3/4" Tapered, Lightning	912-4559



PP3000,
PB30G2 & Lightning
20 HPPower Pack

PHONE: 800.331.6653 (USA only) | INTERNATIONAL: +1 262.567.8833
FACSIMILE: 262.567.8833 | EMAIL: info@hammerheadmole.com

PORTABURST LIGHTNING® PIPE BURSTING SYSTEM

HYDRAULIC POWER PACK OPTIONS

Description	Model	Part #
PP13A (13 HP Honda) (requires Control Stand: 912-5052 or Coaster/ Control Stand: 912-3346)	All Models	912-5050
PP13B (13 HP Honda) (includes on-board controls)	All Models	912-5055
PP3000 (requires Control Stand: 912-5052 or Coaster/ Control Stand: 912-3346)	All Models	933-0100

CONTROL STATIONS FOR PP13A, PP3000 OR ALTERNATE SOURCE

Control Stand	All Models	912-5052
Coaster/Control Stand	All Models	912-3346
Hose, 5/8" x 15 feet (required to run system from an alternative hydraulic power source, two required)	All Models	912-3056
Quick Connect Coupler, Flat Face, Nipple, 1/2" (M)	All Models	912-3038
Quick Connect Coupler, Flat Face, 1/2" (F)	All Models	912-3039

PULLING CABLES

3/4" X 75 feet, Swaged, Stud End	912-3161
3/4" X 100 feet, Swaged, Stud End	912-3163
3/4" X 150 feet, Swaged, Stud End	912-3162



**PP13A
Power Pack**



**Extraction
Cage**



**Control
Stand**



**Coaster/
Control Stand**

Visit our website at www.hammerheadtrenchless.com.
For ordering or pricing information, contact your regional sales representative.

TOOLING SELECTION CHART

HOW TO USE THESE CHARTS

Match the host pipe size and material with the new HDPE pipe size being installed to find the tooling string reference. Use the tooling string reference chart to identify the tooling string required for the project specified.

TOOLING SELECTION (SAE)						
Host Pipe		New HDPE Pipe Size (in)				
Size (in)	Material	2" IPS	3" IPS	4" IPS	4" DIPS	6" IPS
2.00	Steel	A	B			
2.00	Copper	A	B			
2.00	PVC					
2.00	HDPE					
3.00	Clay		C	D*	E*	
3.00	Concrete		C	D*	E*	
3.00	Orangeburg		C	D*	E*	
3.00	Cast Iron		C	D*	E*	
3.00	AC		C	D*	E*	
3.00	Steel					
3.00	Copper					
3.00	PVC			D	E	
3.00	HDPE			D	E	
4.00	Clay			F	G	I
4.00	Concrete			F	G	I
4.00	Orangeburg			F	G	I
4.00	Cast Iron			D	E	H
4.00	Fiberglass			F	G	I
4.00	AC			F	G	I
4.00	Steel					
4.00	Copper					
4.00	PVC			D	E	
4.00	HDPE			D	E	
6.00	Clay					I
6.00	Concrete					I
6.00	Orangeburg					I
6.00	Cast Iron					I
6.00	Fiberglass					I
6.00	AC					I
6.00	Steel					
6.00	Copper					
6.00	PVC					
6.00	HDPE					

TOOLING STRING TABLE REFERENCE (SAE)				
Ref	Assembly	Slitter	Puller	QG BurstHead
A		912-3363	902-2400	
B		912-3363	902-2600	
C	912-3315			
D		912-3370		911-3074
E		912-3370		911-3078
F				911-3074
G				911-3078
H		912-3370		911-3076
I				911-3076

TOOLING SELECTION (METRIC)				
Host Pipe		New HDPE Pipe Size (mm)		
Size (mm)	Material	110	125	160
110	Clay	L	M	O
110	Concrete	L	M	O
110	Orangeburg	L	M	O
110	Cast Iron	J	K	N
110	Fiberglass	L	M	O
110	AC	L	M	O
110	Steel			
110	Copper			
110	PVC	J	K	
110	HDPE	J	K	
125	Clay	L	M	O
125	Concrete	L	M	O
125	Orangeburg	L	M	O
125	Cast Iron	J	K	N
125	Fiberglass	L	M	O
125	AC	L	M	O
125	Steel			
125	Copper			
125	PVC	J	K	
125	HDPE	J	K	
160	Clay			O
160	Concrete			O
160	Orangeburg			O
160	Cast Iron			O
160	Fiberglass			O
160	AC			O
160	Steel			
160	Copper			
160	PVC			
160	HDPE			

TOOLING STRING TABLE REFERENCE (METRIC)				
Ref	Assembly	Slitter	Puller	QG BurstHead
J		912-3370		911-3077
K		912-3370		911-3078
L				911-3077
M				911-3078
N		912-3370		911-3079
O				911-3079

The tooling configuration recommendations listed here are relevant only to current factory equipment availability. Any projects outside of these recommendations require factory review and/or specialized tooling.

*The slitter blade design is intended for PVC and HDPE applications. Dulling of the blade will occur when used in these applications.

QUICK GRIP® BURST HEADS

QUICK GRIP BURSTING HEADS

Description	Part #
Quick Grip Burst Head, 4.00", SDR 11-26, (Stud Collar)	911-3074
Quick Grip Burst Head, 4.00", SDR 11-17, (Stud Collar) DIPS ONLY	911-3078
Quick Grip Burst Head, 6.00", SDR 11-26, (Stud Collar)	911-3076
Quick Grip Burst Head, 110 mm, SDR 11-26, (Stud Collar)	911-3077
Quick Grip Burst Head, 125 mm, SDR 11-26, (Stud Collar)	911-3078
Quick Grip Burst Head, 160 mm, SDR 11-26, (Stud Collar)	911-3079
Quick Grip Burst Head, 4.00", SDR 11-26, (Stud Collar) (Piggyback Style)	911-3110
Quick Grip Burst Head, 6.00", SDR 11-26, (Stud Collar) (Piggyback Style)	911-3111

QUICK GRIP BURST HEAD WEAR ITEMS

O-Rings, 4" Quick Grip Burst Head (2 required)	902-0318
O-Rings, 110 mm Quick Grip Burst Head (2 required)	902-0318
O-Rings, 125 mm Quick Grip Burst Head (2 required)	902-0409
O-Rings, 6" Quick Grip Burst Head (3 required)	902-0506
O-Rings, 160 mm Quick Grip Burst Head (3 required)	902-0506

**Quick Grip Burst
Head (Stud Collar)**

**Piggy Back Style
Quick Grip Burst Head
(Stud Collar)**



**Quick Grip burst heads connect
to pipe without hand tools and
can negotiate up to 45° bends.**

LATERAL BURSTING ACCESSORIES AND TOOLING

SLITTERS, PULLING ASSEMBLIES AND OTHER TOOLING

Description	Part #
Cast Iron and PVC Slitter Head Assembly (Used in front of Quick Grip Burst Head)	912-3370
Bursting Head, 3.00" (w/ 3.00" Sleeved Puller)	912-3315
Sleeved Puller, HDPE, 2.00"	902-2400
Sleeved Puller, HDPE, 3.00"	902-2600
Pipe Puller, 4.00", Segmented	911-5004
Pipe Puller, 6.00", Segmented	911-5006
Slitter Assembly, 2.00", Galvanized	912-3363
Stud End to Eye End Adapter	911-3080



**Cast Iron and PVC
Slitter Head Assembly**



**Slitter Assembly for 2.00" Galvanized
Pipe (requires sleeved puller not included in kit)**



**Stud End to
Eye End Adapter**



**Bursting Head, 3.00"
(Shown without 3.00" Sleeved Puller included in kit)**



**Sleeved Puller,
HDPE, 2.00"**

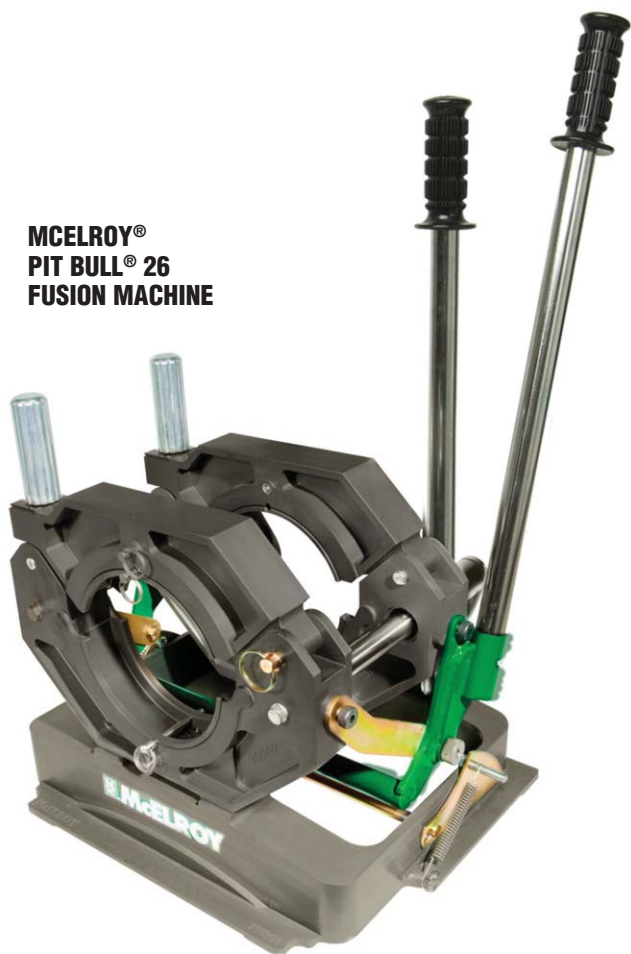


**Sleeved Puller,
HDPE, 3.00"**



**Pipe Puller, 4.00", Segmented
(For pulling PVC pipe, includes 75' chain)**

MCELROY® PIT BULL® 26 FUSION MACHINE



MCELROY PIT BULL 26 FUSION MACHINE

The Pit Bull 26 fuses pipe sizes from 2.00" IPS to 6.00" DIPS and 63 mm to 180 mm. The 26 offers McElroy's patented Centerline Guidance System, a semi-automatic locking cam system that maintains force during the cooling cycle, and the ability to fit on the Manual Fusion Stand accessory.

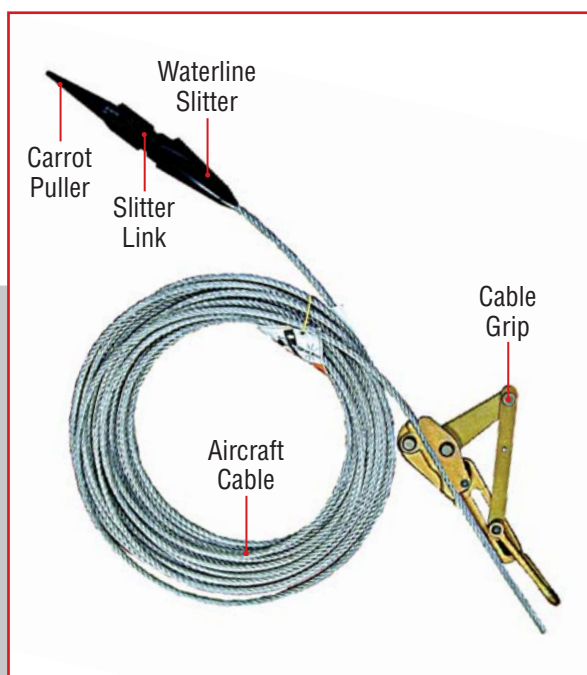
MCELROY PIT BULL 14 FUSION MACHINE

The McElroy Pit Bull 14 fuses 1.00" IPS to 4.00" DIPS (32 mm to 110 mm) pipe. It is a compact, lightweight, highly reliable and rugged machine. The machine incorporates McElroy's patented Centerline Guidance System, and is designed to butt fuse tees, ells, and other fittings with consistent high-quality results. The machine's semi-automatic locking cam system maintains force during the cooling cycle.

MCELROY PIPE FUSION MACHINES

Description	Part #
Pit Bull 26, Fusion Machine Package (Includes: Pit Bull 26 Fusion Machine, Butt Plate Heater Assy, Facer Assy, Facer Stand and the following inserts; 4.00" IPS, 6.00" IPS, 6.00" DIPS)	912-5200
Pit Bull 14, Fusion Machine Package (Includes: Pit Bull 14 Fusion Machine, Butt Plate Heater Assy, Facer Assy, Facer Stand and the following inserts; 4.00" IPS, 4.00" DIPS)	912-5210
Pit Bull 14, Inserts, 2.00" IPS	912-5217
Pit Bull 14, Inserts, 3.00" IPS	912-5218

WATER LINE SLITTER SYSTEM



TRENCHLESS REPLACEMENT OF WATER SERVICES

Waterline slitters are a profitable trenchless solution for water line service replacement. The Waterline Slitter water service replacement system is a portable, cost effective and efficient method of replacing $\frac{3}{4}$ " to 1" service pipes in a minimum amount of time while eliminating costly excavation and surface repair.

WATERLINE SLITTER KITS

Description	Part #
Water Line Slitter Kit, 1.00", 75' Cable	912-1500
Water Line Slitter Kit, 1.00", 100' Cable	912-1512

WATERLINE SLITTER COMPONENTS

Water Line Slitter 1.00"	912-1501
Slitter Link Assembly	912-1509
Screw, SHC 3/8-16 x 1.50"	912-1503
Link, Slitter	912-1504
0.50" – 1.00" Carrot Puller	901-0102
1.00" – 1.25" Carrot Puller	901-0122
Cable Grip	912-1505

CABLE OPTIONS

Aircraft Cable 3/8" x 50'	912-1506
Aircraft Cable 3/8" x 75'	912-1502
Aircraft Cable 3/8" x 100'	912-1507
Aircraft Cable 3/8" x 150'	912-1510
Aircraft Cable 3/8" x 200'	912-1511

KITS INCLUDE: 1.00" Water Line Slitter, 3/8" Aircraft Cable, Cable Grip, Slitter Link, 0.50"–1.00" Carrot Puller



HAMMERHEAD®
TRENCHLESS EQUIPMENT

P.O. Box 3 | Oconomowoc, Wisconsin 53066 USA
800.331.6653 (USA only) | international: +1 262.567.8833
web: www.hammerheadtrenchless.com | email: info@hammerheadmole.com

Earth Tool Company LLC reserves the right to make changes in engineering, design and specifications; add improvements; or discontinue manufacture at any time without notice or obligation. HAMMERHEAD, HAMMERHEAD MOLE, HAMMERHEAD LOGO, HYDRALINER, HYDRALINER LOGO, PORTABURST, PORTAVISION, LIGHTNING, and QUICK GRIP are registered trademarks of Earth Tool Company LLC, Oconomowoc, WI. SOURCE ONE, SOURCE ONE LOGO, PIPE PATCH AND PIPE PATCH LOGO are registered trademarks of Source One Environmental, Davidson, Michigan. BRAWOLINER is a registered trademark of Karl Otto Braun GmbH & Co. KG, Wolfstein, Germany. IPAD and APPLE LOGO are registered trademarks of Apple Inc. WINDOWS is a registered trademark of Microsoft Corporation in the United States and other countries. GOOGLE and the GOOGLE LOGO are registered trademarks of Google Inc. MCELROY and PIT BULL are registered trademarks of McElroy Manufacturing, Tulsa, Oklahoma. ©2013 Earth Tool Company LLC. All Rights Reserved.