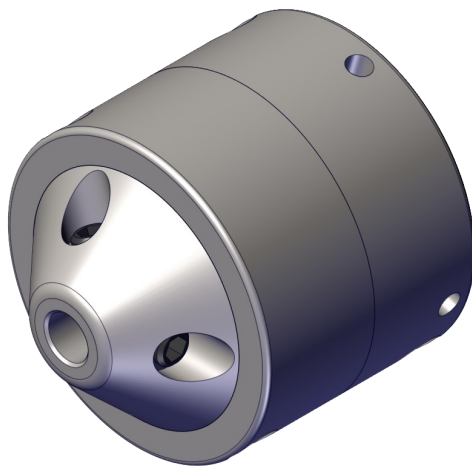




Revision 8.2.2018

I  
N  
S  
T  
R  
U  
C  
T  
I  
O  
N  
S

## Micro/Mini Miller Safety Clutch and Strain Relief Spring Installation Instructions



### **WARNING**

These instructions are for your personal safety. Always ensure that you have read and understood these instructions.



We now have resellers in the U.S., Europe & Australasia.

Locate your reseller at [picotesolutions.com](http://picotesolutions.com)

# TABLE OF CONTENTS

TOPIC	PAGE/S
TABLE OF CONTENTS	2
SAFETY INFORMATION	2
UPGRADE PACKAGE CONTENT	3
INSTALLION GUIDES	4-8
SPARE PART LIST	9
CONTACT INFORMATION	9

**SAVE ALL WARNINGS AND INSTRUCTIONS FOR FUTURE REFERENCE**

## SAFETY INFORMATION

### **WARNING**

Always ensure that the machine is fully turned off and unplugged before inspection, maintenance, or installing any accessories to the machine. Always follow the instructions in the manufacturer's manual.

## Personal Protective Equipment (PPE)

Always use Personal Protective Equipment when carrying out the update, including suitable overalls / protective clothing & footwear and the following:



Always wear suitable cut-resistant gloves to prevent any hand injuries. Any open injuries or skin irritations should be covered at all times to avoid contact with dust, dirt or sewage.

# PACKAGE CONTENTS

## **Micro/Mini Miller Safety Clutch upgrade package includes:**

- 1x Micro/Mini Safety Clutch
- 1x Micro/Mini Hand Guard for Safety Clutch
- 1x Micro/Mini Strain Relief Spring 9/13mm casing (8mm thick outer casing)
- 2x DIN7991 Bolt M10x25
- 1x DIN912 Bolt M6x25
- 2x Washer A6
- 1x Locking Nut M6
- 1x Installation Instructions

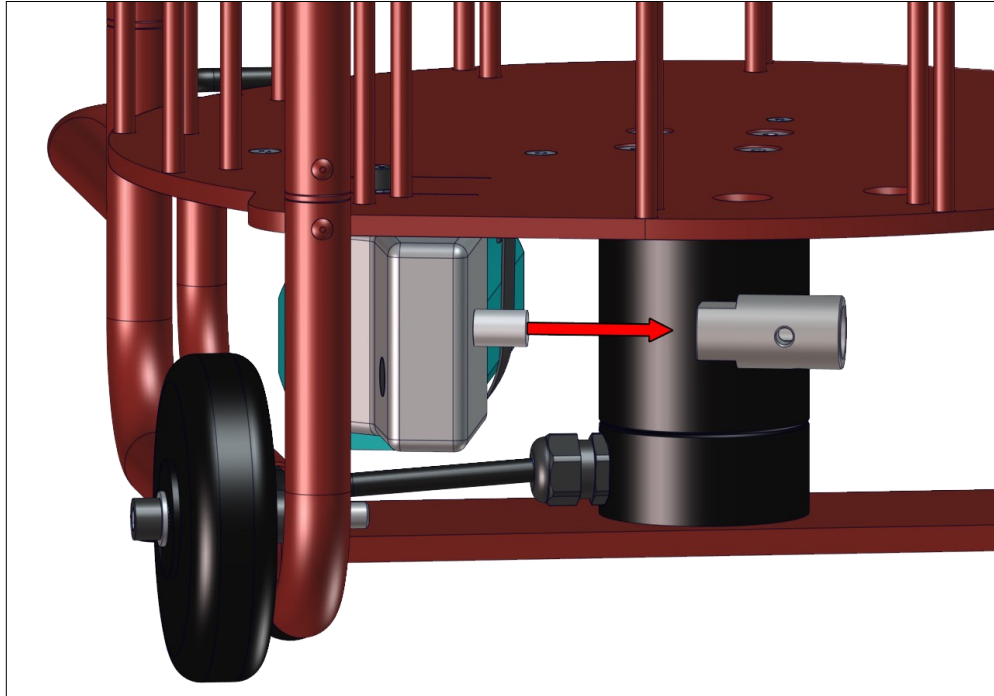
### Additional Tools needed:

- Hex Key 4mm, Hex Key 5mm & Hex Key 6mm
- Smooth jaw adjustable Wrench 10mm & 20mm
- Drilling machine and drill bit 6.5mm/1/4"

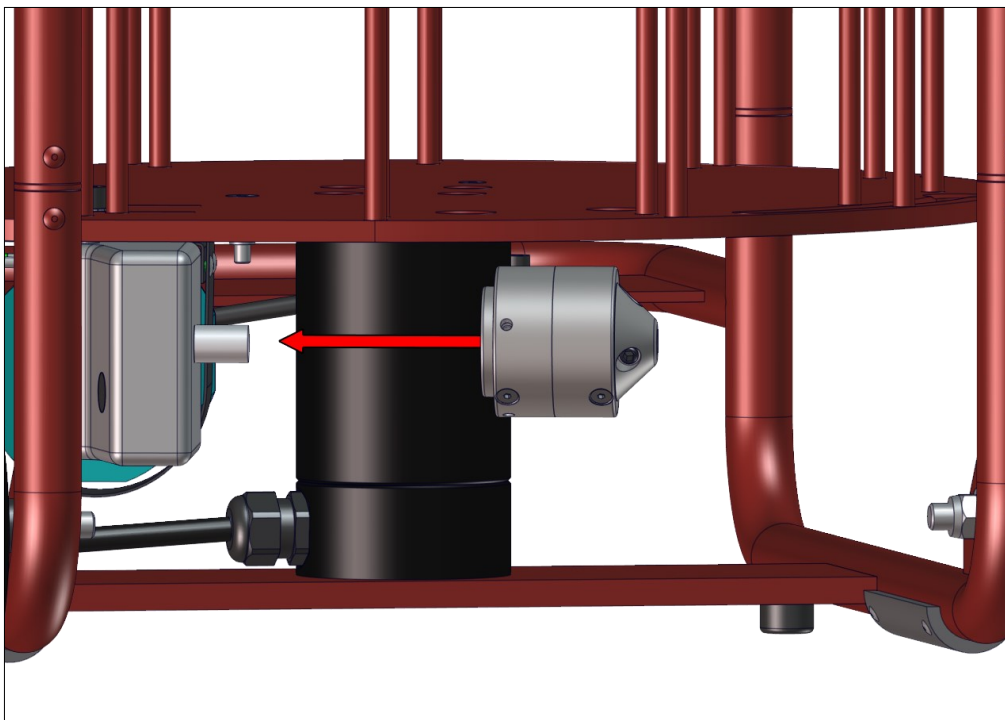
**The installation instructions list all additional tools and parts required during installation. Please read the instructions carefully before installation.**

To watch practical demonstration videos, or to download an electronic copy of these instructions, please visit [www.picotesolutions.com](http://www.picotesolutions.com). Please note that videos are not intended as a replacement or alternative to this operating and safety manual, but only as an additional learning tool.

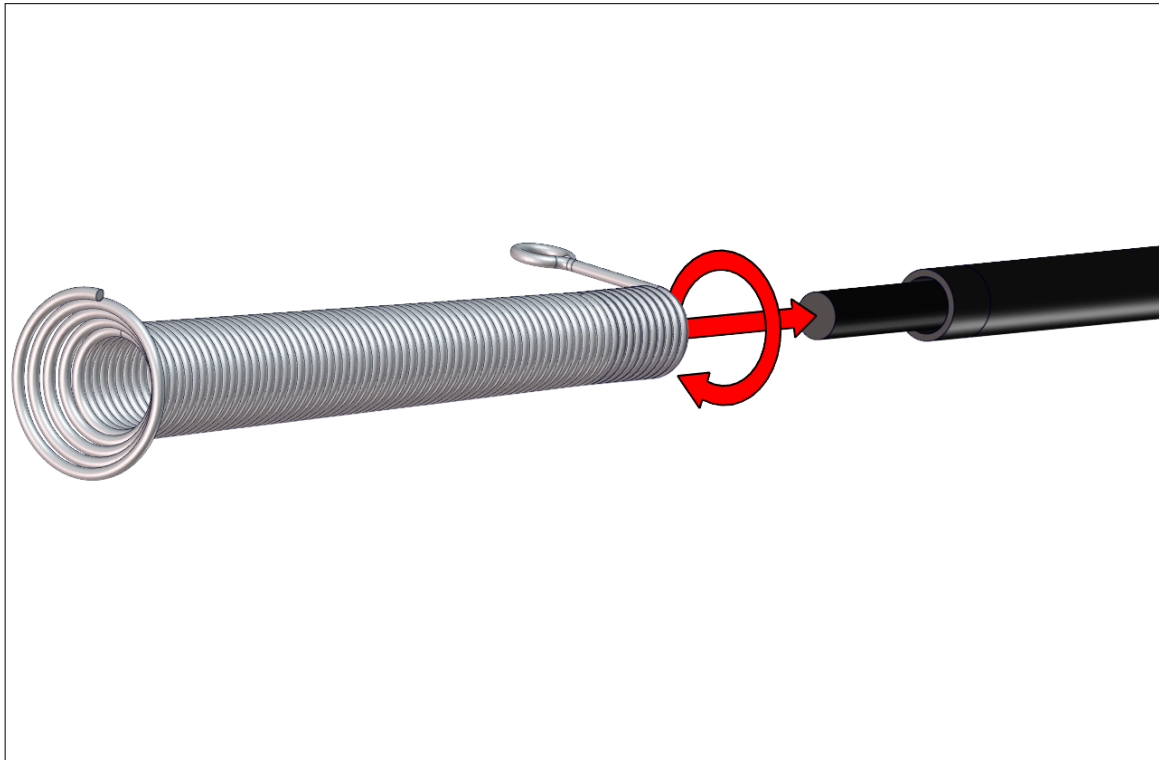
- Step 1. Detach the shaft from the Miller and its reel. Use a Hex Key 4mm to loosen two Hex Socket Set Screws (DIN916 M8), so that you can remove the shaft from the Shaft Socket. Use a smooth jaw adjustable wrench 20mm to disconnect the Shaft Socket from the Motor. At the same time, you have to press the black button behind the Motor to lock the Motor Axle.



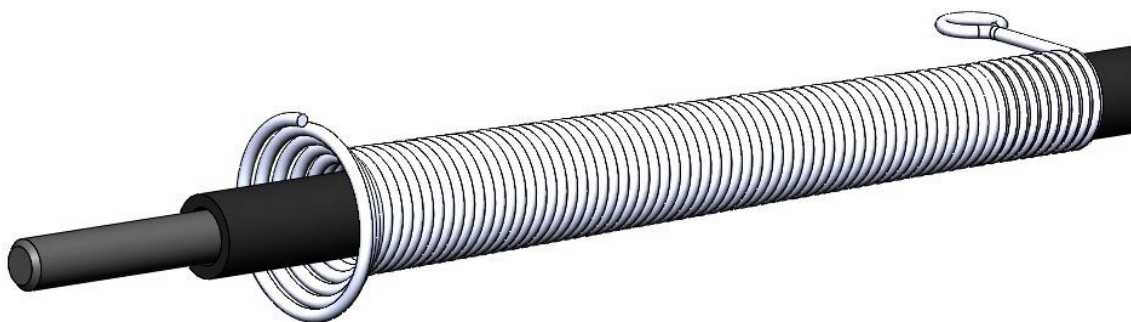
- Step 2. Connect the Safety Clutch to the Motor. When tightening it, press the Motor's locking button behind the Drill/Motor. Tightening can be done manually.



- Step 3. Push the Shaft end back under the Miller's Reel Plate and add the Strain Relief Spring onto the Outer Casing. Push and manually rotate clockwise at the same time.



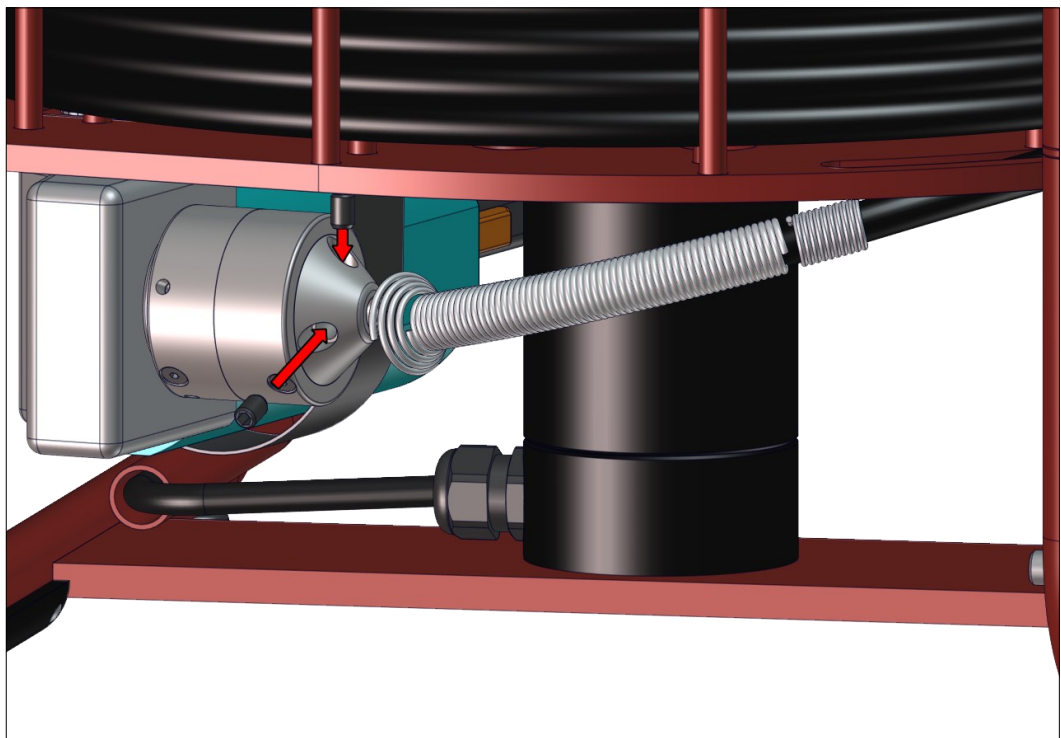
- Step 4. The Outer Casing have to come through the Strain Relief Spring. This is really important part of STEP 5.



- Step 5. The Strain Relief Spring is correctly installed when the Outer Casing comes outside of the cone so that there is only a small gap between the Safety Clutch and the Outer Casing.



- Step 6. Connect the Shaft to the Safety Clutch and tighten the Hex Socket Set Screws (2pcs) with a Hex Key 4mm. The Outer casing should almost touch the Safety Clutch, bare cable is always weak and therefore can twist.

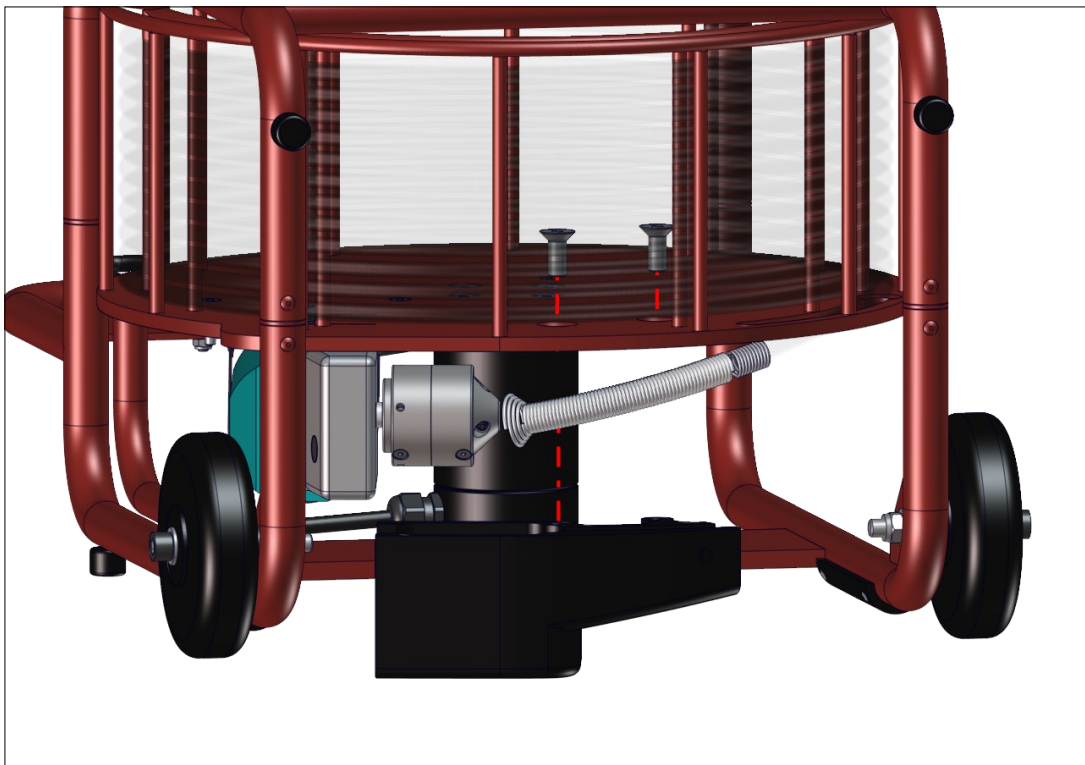




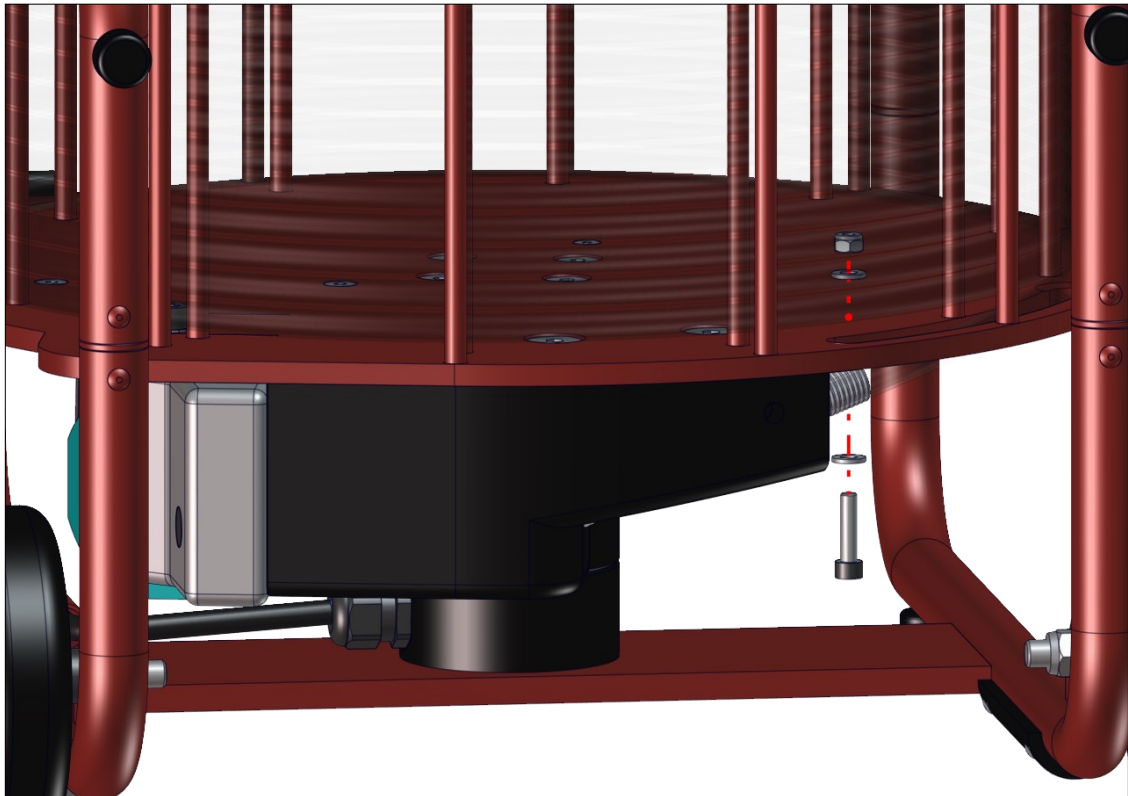
Step 7. Correctly installed Safety Clutch.



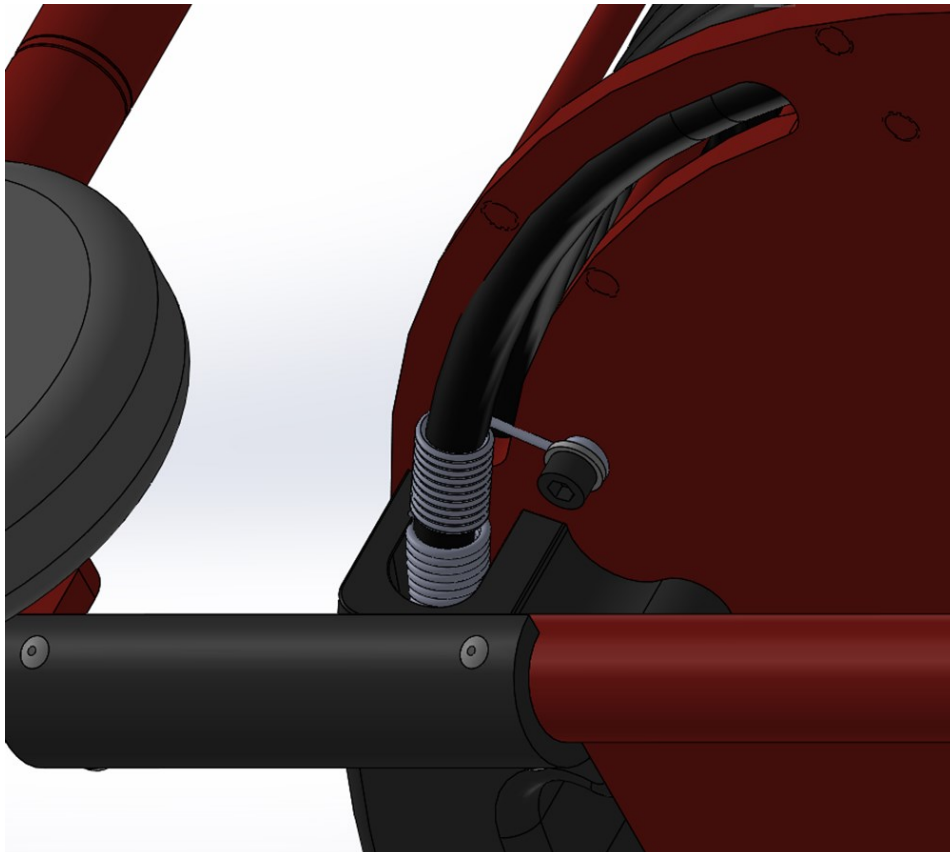
Step 8. Add the Hand Guard and tighten it with two M10x25mm bolts. Use a Hex Key 6mm.



Step 9. During the final step, drill a 6.5mm/1/4" hole for the Strain Relief Lock so you can get the M6x25mm Bolt through the Miller's Reel Plate.



Step 10. Put the Bolt through the Strain Relief's Locking Ring and the Miller's Reel Plate and tighten it using a Hex Key 5mm and a smooth jaw adjustable wrench 10mm.





# Spare Part List

## Micro/Mini Safety Clutch Upgrade package 9530000041

900000856	Micro/Mini Safety Clutch
9530000134	Micro/Mini Strain Relief Spring 9/13mm casing (8mm thick)
9530000031	Micro/Mini Hand Guard for safety clutch
9990600002	DIN7991 Bolt M10x25
9990700024	DIN912 Bolt M6x25
9990100006	Washer A6
9991200006	Locking Nut M6

## More Information

For more information, please contact your reseller or Picote at [support@picotesolutions.com](mailto:support@picotesolutions.com)

---

### Manufacturer

#### **Picote Solutions Oy Ltd**

Urakoitsijantie 8  
06450 Porvoo, Finland  
[sales@picotesolutions.com](mailto:sales@picotesolutions.com)

### Technical Support

#### **Picote Solutions**

[jake@picotesolutions.com](mailto:jake@picotesolutions.com)  
[richard@picotesolutions.com](mailto:richard@picotesolutions.com)

### Authorized Resellers:

Please visit [picotesolutions.com](http://picotesolutions.com) for  
reseller information